

# **Complaints**

## **Procedure 2017**

### **Policy Review**

This policy will be reviewed in full on an annual basis.

This Policy was last reviewed and agreed by the Cadmus Standing Committee on: 2<sup>nd</sup> November 2017

Executive Headteacher Signature :

A handwritten signature in black ink, appearing to read 'M. Mal'.

Review date: November 2021

This page left intentionally blank

## Contents

Stage One: Complaint Heard by Staff Member .....	5
Stage Two: Complaint Heard by Headteacher .....	5
Stage Three: Complaint Heard by Governing Bodies Complaints Appeal Panel .....	5
The Remit of The Complaints Appeal Panel: .....	6
Roles and Responsibilities: .....	7
The Role of the Clerk.....	7
The Role of the Chair of the Governing Body or the Nominated Governor .....	7
The Role of the Chair of the Panel .....	7
Notification of the Panel’s Decision:.....	8
Checklist for a Panel Hearing .....	9
<b>Cadmus Family of Schools Complaint Form .....</b>	<b>11</b>

This page left intentionally blank

## **Stage One: Complaint Heard by Staff Member**

It is in everyone's interest that complaints are resolved at the earliest possible stage. The experience of the first contact between the complainant and the school can be crucial in determining whether the complaint will escalate. To that end, if staff are made aware of the procedures, they know what to do when they receive a complaint.

It would assist the procedure if the school respected the views of a complainant who indicates that he/she would have difficulty discussing a complaint with a particular member of staff. In these cases, the Complaints Co-ordinator (normally the Head of School or Deputy / Assistant Headteacher) can refer the complainant to another staff member. Where the complaint concerns the Headteacher or Executive Headteacher, the Complaints Co-ordinator can refer the complainant to the Chair of Governors.

Similarly, if the member of staff directly involved feels too compromised to deal with a complaint, the Complaints Co-ordinator may consider referring the complainant to another staff member. The member of staff may be more senior but does not have to be. The ability to consider the complaint objectively and impartially is crucial.

Where the first approach is made to a Governor, the next step would be to refer the complainant to the appropriate person and advise them about the procedure. It would be useful if governors did not act unilaterally on an individual complaint outside the formal procedure or be involved at the early stages in case they are needed to sit on a panel at a later stage of the procedure.

## **Stage Two: Complaint Heard by Headteacher / Head of School**

The Headteacher's influence will already have shaped the way complaints are handled in the school. At this point, the complainant may be dissatisfied with the way the complaint was handled at stage one as well as pursuing their initial complaint. The head may delegate the task of collating the information to another staff member but not the decision on the action to be taken.

## **Stage Three: Complaint Heard by Governing Bodies Complaints Appeal Panel**

The complainant needs to write to the Chair of Governors giving details of the complaint. The Chair, or a nominated governor, will convene a GB complaints panel

The governors' appeal hearing is the last school-based stage of the complaints process, and is not convened to merely rubber-stamp previous decisions.

Individual complaints would not be heard by the whole GB at any stage, as this could compromise the impartiality of any panel set up for a disciplinary hearing against a member of staff following a serious complaint.

The Governing Body may nominate a number of members with delegated powers to hear complaints at that stage, and set out its terms of reference. These can include:

- drawing up its procedures;
- hearing individual appeals;
- making recommendations on policy as a result of complaints.

The procedure adopted by the panel for hearing appeals would normally be part of the school's complaints procedure. The panel can be drawn from the nominated members and may consist of three or five people. The panel may choose their own chair.

### **The Remit of The Complaints Appeal Panel:**

The panel can:

- dismiss the complaint in whole or in part;
- uphold the complaint in whole or in part;
- decide on the appropriate action to be taken to resolve the complaint;
- recommend changes to the school's systems or procedures to ensure that problems of a similar nature do not recur.

There are several points which any governor sitting on a complaints panel needs to remember:

- a. It is important that the appeal hearing is independent and impartial and that it is seen to be so. No governor may sit on the panel if they have had a prior involvement in the complaint or in the circumstances surrounding it. In deciding the make-up of the panel, governors need to try and ensure that it is a cross-section of the categories of governor and sensitive to the issues of race, gender and religious affiliation.
- b. The aim of the hearing, which needs to be held in private, will always be to resolve the complaint and achieve reconciliation between the school and the complainant. However, it has to be recognised the complainant might not be satisfied with the outcome if the hearing does not find in their favour. It may only be possible to establish the facts and make recommendations which will satisfy the complainant that his or her complaint has been taken seriously.
- c. An effective panel will acknowledge that many complainants feel nervous and inhibited in a formal setting. Parents often feel emotional when discussing an issue that affects their child. The panel chair will ensure that the proceedings are as welcoming as possible. The layout of the room will set the tone and care is needed to ensure the setting is informal and not adversarial.
- d. Extra care needs to be taken when the complainant is a child. Careful consideration of the atmosphere and proceedings will ensure that the child does not feel intimidated. The panel needs to be aware of the views of the child and give them equal

consideration to those of adults. Where the child's parent is the complainant, it would be helpful to give the parent the opportunity to say which parts of the hearing, if any, the child needs to attend.

- e. The governors sitting on the panel need to be aware of the complaints procedure.

## **Roles and Responsibilities:**

### **The Role of the Clerk**

The Department strongly recommends that any panel or group of governors considering complaints be clerked. The clerk would be the contact point for the complainant and be required to:

- set the date, time and venue of the hearing, ensuring that the dates are convenient to all parties and that the venue and proceedings are accessible;
- collate any written material and send it to the parties in advance of the hearing;
- meet and welcome the parties as they arrive at the hearing;
- record the proceedings;
- notify all parties of the panel's decision.

### **The Role of the Chair of the Governing Body or the Nominated Governor**

The nominated governor role:

- check that the correct procedure has been followed;
- if a hearing is appropriate, notify the clerk to arrange the panel;

### **The Role of the Chair of the Panel**

The Chair of the Panel has a key role, ensuring that:

- the remit of the panel is explained to the parties and each party has the opportunity of putting their case without undue interruption;
- the issues are addressed;
- key findings of fact are made;
- parents and others who may not be used to speaking at such a hearing are put at ease;
- the hearing is conducted in an informal manner with each party treating the other with respect and courtesy;
- the panel is open minded and acting independently;

- no member of the panel has a vested interest in the outcome of the proceedings or any involvement in an earlier stage of the procedure;
- each side is given the opportunity to state their case and ask questions;
- written material is seen by all parties. If a new issue arises it would be useful to give all parties the opportunity to consider and comment on it.

#### **Notification of the Panel's Decision:**

The chair of the panel needs to ensure that the complainant is notified of the panel's decision, in writing, with the panel's response; this is usually within a set deadline which is publicised in the procedure. The letter needs to explain if there are any further rights of appeal and, if so, to whom they need to be addressed.

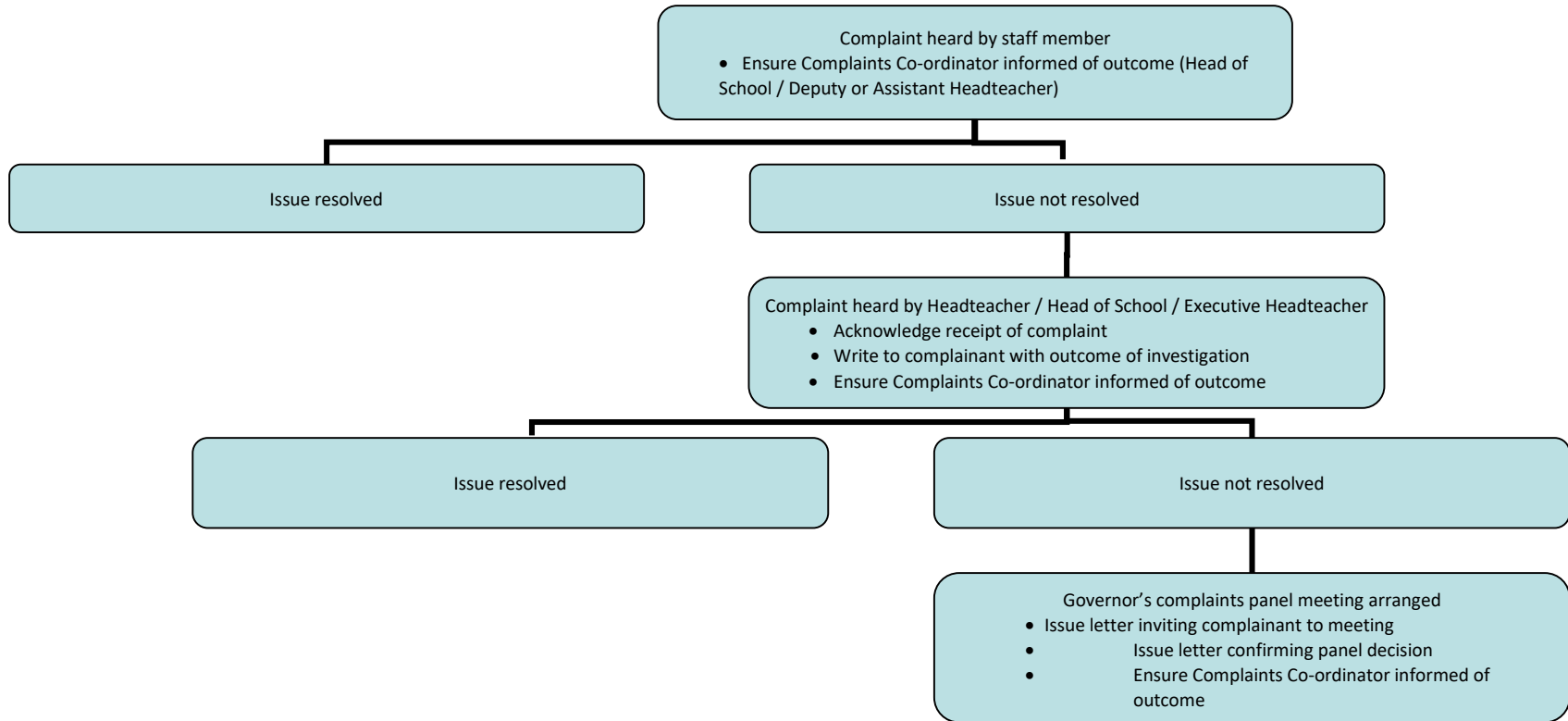
## Checklist for a Panel Hearing

The panel needs to take the following points into account:

- The hearing is as informal as possible.
- Witnesses are only required to attend for the part of the hearing in which they give their evidence.
- After introductions, the complainant is invited to explain their complaint, and be followed by their witnesses.
- The headteacher may question both the complainant and the witnesses after each has spoken.
- The headteacher is then invited to explain the school's actions and be followed by the school's witnesses.
- The complainant may question both the headteacher and the witnesses after each has spoken.
- The panel may ask questions at any point.
- The complainant is then invited to sum up their complaint.
- The headteacher is then invited to sum up the school's actions and response to the complaint.
- Both parties leave together while the panel decides on the issues.
- The chair explains that both parties will hear from the panel within a set time scale.

# Flowchart

## Summary of Dealing with Complaints



## Cadmus Family of Schools Complaint Form

Please complete and return to ..... (Complaints Co-ordinator) who will acknowledge receipt and explain what action will be taken.

**Your name:**

**Pupil's name:**

**School Name:**

**Your relationship to the pupil:**

**Address:**

**Postcode:**

**Day time telephone number:**

**Evening telephone number:**

**Please give details of your complaint:**

**What action, if any, have you already taken to try and resolve your complaint.  
(Who did you speak to and what was the response)?**

**What actions do you feel might resolve the problem at this stage?**

**Are you attaching any paperwork? If so, please give details.**

**Name:**

**Signature:**

**Date:**

***Official use:***

**Date acknowledgement sent:**

**By who:**

**Complaint referred to:**

**Date:**

## **Vexatious Complaints:**

Leaflet that could be sent to persons who make spurious/vexatious or abusive complaints, if the policy is adopted by the Governing Body:

### **Cadmus Family of Schools Policy For Handling Unreasonably Persistent, Harassing Or Abusive Complainants**

The head teacher and governing body are fully committed to the improvement of our school. We welcome feedback from parents/carers and will always try to resolve any concerns as quickly as possible. There is a procedure for parents to use if they wish to make a formal complaint. Sometimes, however, parents or carers pursuing complaints or other issues treat staff and others in a way that is unacceptable. Whilst we recognise that some complaints may relate to serious and distressing incidents, we will not accept threatening or harassing behaviour towards any members of the school community. The aim of this leaflet is to provide information about our school policy on unreasonably persistent complainants or harassment of staff.

#### **What do we mean by ‘an unreasonably persistent complainant’?**

An unreasonably persistent complainant may be anyone who engages in unreasonable behaviour when making a complaint. This will include persons who pursue complaints in an unreasonable manner.

Unreasonable behaviour may include: MP02 School Complaints Procedures (Maintained Schools in England)

#### **Actions which are:**

- out of proportion to the nature of the complaint, or
- persistent – even when the complaints procedure has been exhausted, or
- personally harassing, or
- unjustifiably repetitious

#### **An insistence on:**

- pursuing unjustified complaints and/or
- unrealistic outcomes to justified complaints
- pursuing justifiable complaints in an unreasonable manner (eg using abusive or threatening language; or
- making complaints in public or via a social networking site such as Facebook; or
- refusing to attend appointments to discuss the complaint.

## **What is 'harassment'?**

We regard harassment as the unreasonable pursuit of issues or complaints, particularly if the matter appears to be pursued in a way intended to cause personal distress rather than to seek a resolution. Behaviour may fall within the scope of this policy if:

- it appears to be deliberately targeted at one or more members of school staff or others, without good cause;
- the way in which a complaint or other issues is pursued (as opposed to the complaint itself) causes undue distress to school staff or others;
- it has a significant and disproportionate adverse effect on the school community.

## **What does the school expect of any person wishing to raise a concern?**

The school expects anyone who wishes to raise concerns with the school to:

- treat all members of the school community with courtesy and respect;
- respect the needs of pupils and staff within the school;
- avoid the use of violence, or threats of violence, towards people or property;
- recognise the time constraints under which members of staff in schools work and allow the school a reasonable time to respond to a complaint;
- follow the school's complaints procedure.

Schools' responses to unreasonably persistent complaints or harassment. This policy is intended to be used in conjunction with the school's complaints procedure. Taken together, these documents set out how we will always seek to work with parents, carers and others with a legitimate complaint to resolve a difficulty.